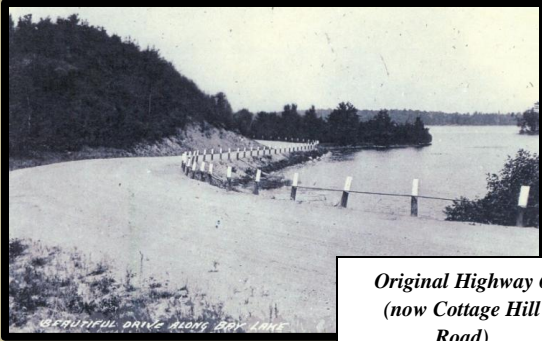
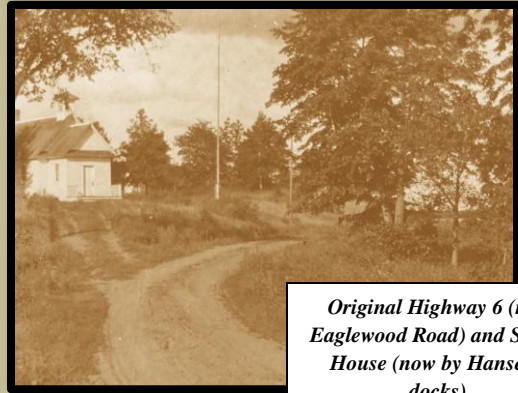


# Historical Pictures



*Original Highway 6  
(now Cottage Hill  
Road)*



*Original Highway 6 (now  
Eaglewood Road) and School  
House (now by Hansen's  
docks).*



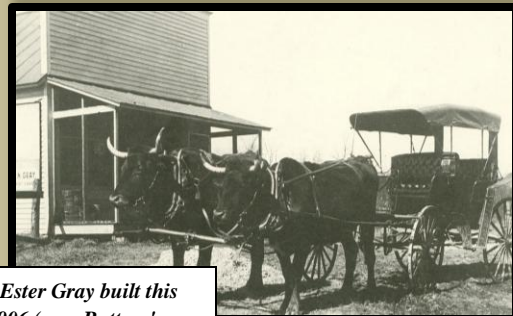
*Battle Point*



*Pioneer Bay & Old Highway 6*



*Sessabegamah Trail at Bay Lake  
(near the location of Ruttger's  
Country Store).*



*Arthur & Ester Gray built this  
store in 1906 (now Ruttger's  
Country Store).*



*South side of the first narrows (now  
"the Pointers") (Woodland Beach  
Resort is now located on the  
shoreline to the left).*



*The Arthur & Ester Gray homestead  
house which was located on the north  
side of Tame Fish Road west of  
County 10/Battle Pt Rd. (Property now  
owned by Larry & Nancy Thoms.)*